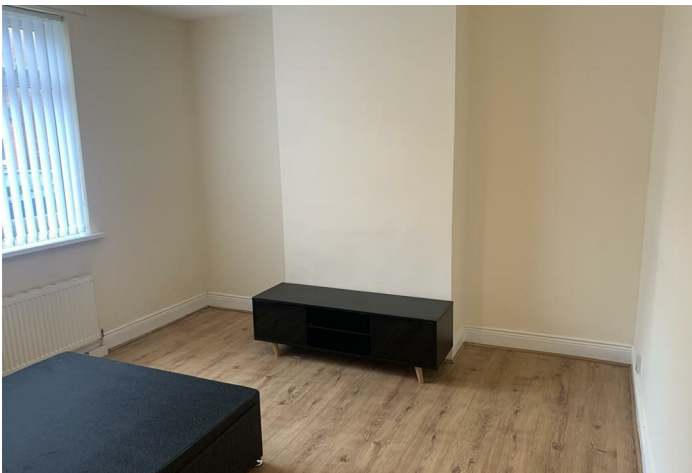




3 Rosiland avenue , Bedlington NE22 5BA

- NO CHAIN
- GROUND FLOOR
- INVESTMENT OPPERTUNITY
- TWO BEDROOM
- WITH YARD
- CLOSE TO LOCAL AMENTIES

£57,000





MAIN BEDROOM

12'1 x 11'7

LIVINGROOM

9'11 x 12'3

BEDROOM TWO

8'1 x 8'9

KITCHEN

11 x 6'04

BATHROOM


8'01 x 5'06








**Local Authority
Council Tax Band
EPC Rating
Tenure**

Energy Efficiency Rating		
	Current	Potential
<i>Very energy efficient - lower running costs</i>		
(92 plus) A		
(81-91) B		
(69-80) C		
(55-68) D		
(39-54) E		
(21-38) F		
(1-20) G		
<i>Not energy efficient - higher running costs</i>		
England & Wales	EU Directive 2002/91/EC	

Environmental Impact (CO ₂) Rating		
	Current	Potential
<i>Very environmentally friendly - lower CO2 emissions</i>		
(92 plus) A		
(81-91) B		
(69-80) C		
(55-68) D		
(39-54) E		
(21-38) F		
(1-20) G		
<i>Not environmentally friendly - higher CO2 emissions</i>		
England & Wales	EU Directive 2002/91/EC	



ML Estates Sales Office

27 Avenue Road, Seaton Delaval, Tyne
And Wear, NE25 0DT

Contact

0191 237 60 60
sd@mlestates.co.uk
www.mlestates.co.uk/

Agents Note: Whilst every care has been taken to prepare these particulars, they are for guidance purposes only. All measurements are approximate and for general guidance purposes only and whilst every care has been taken to ensure accuracy, they should not be relied upon and potential buyers/tenants are advised to recheck the measurements.